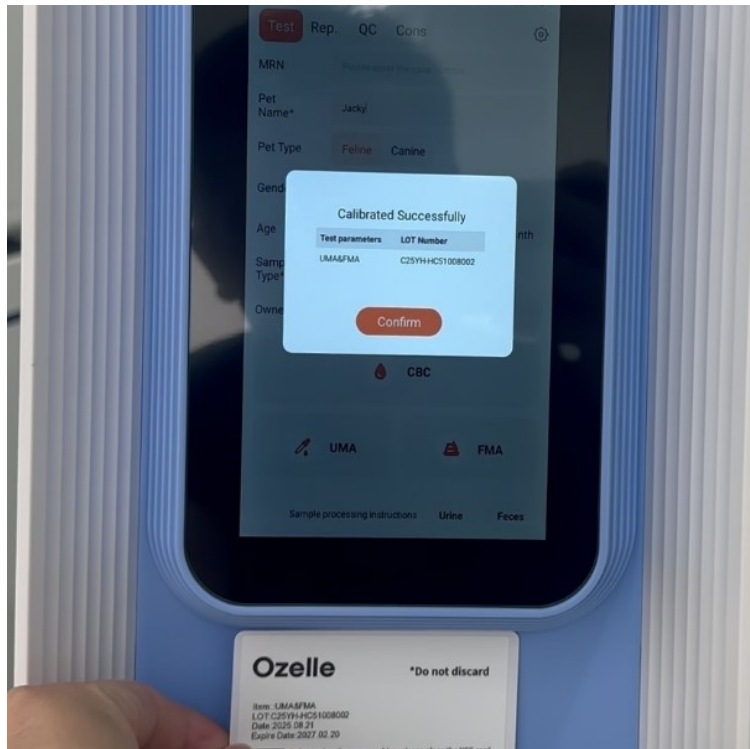
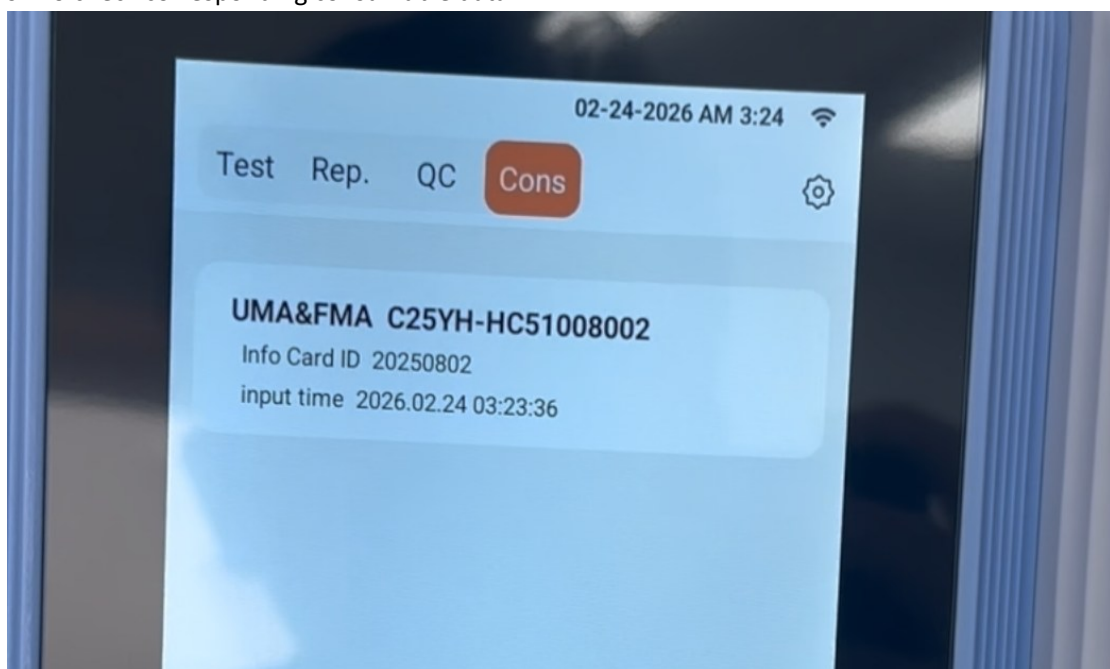


EHVT-75 Feces Test Procedure

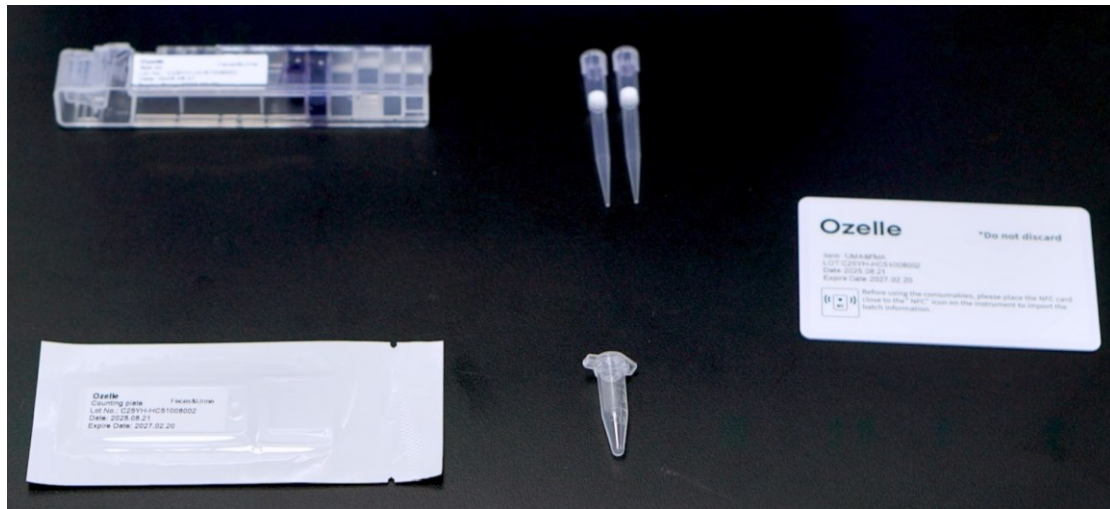
1. Wear gloves before testing.
2. Hold NFC card to the NFC card reading area for 3 seconds to register consumable data.



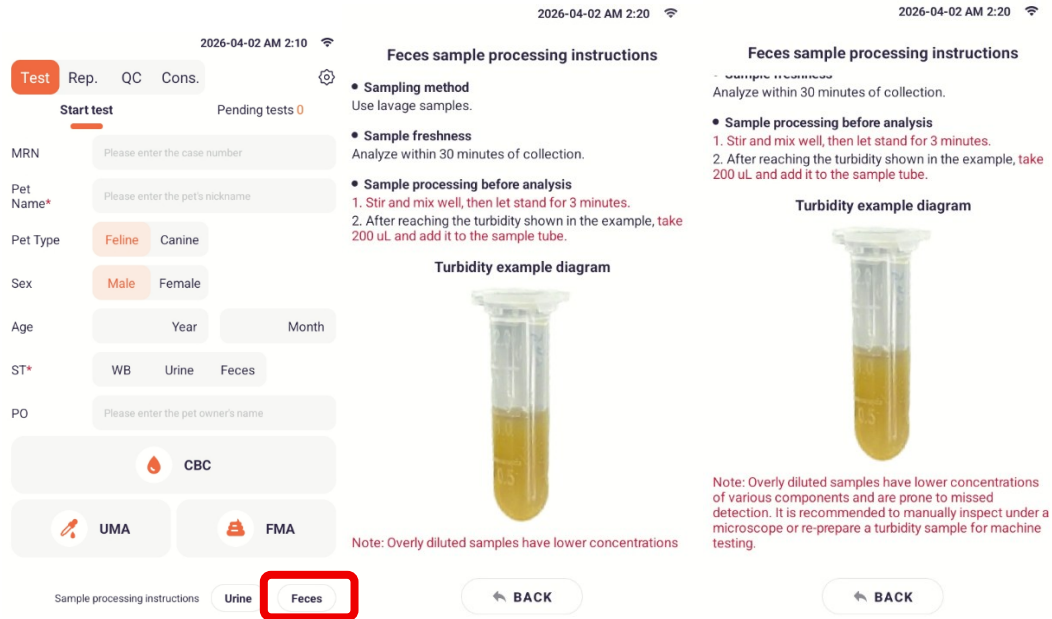
3. Click "Cons." To check corresponding consumable data.



4. Prepare all the consumables (NFC card*1, counting chamber*1, test kit*1, EP tube*1, tip*2, pipette, disposable medical gloves, centrifuge tubes, sterile saline 0.9% NaCl).

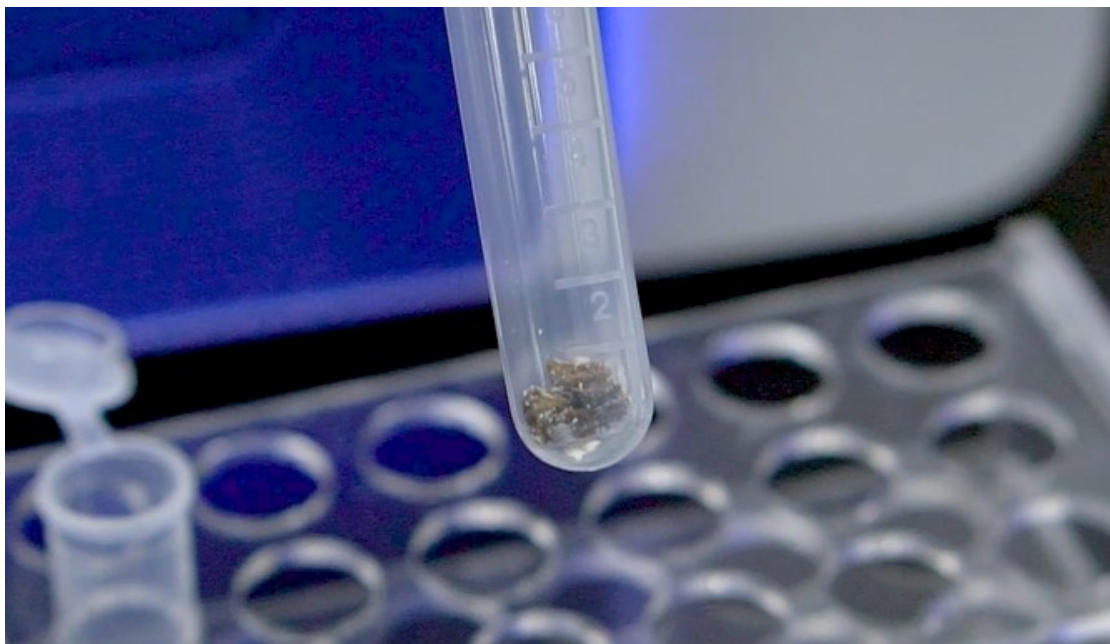


5. Please read the Operation Guide and the Sample Pre-processing Instruction on the instrument first carefully.



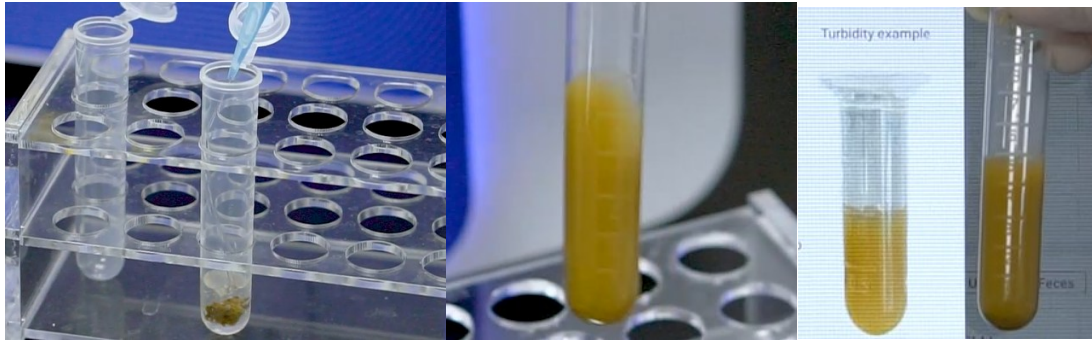
6. Sample pre-processing

Take a soybean-sized feces sample and place it into a centrifuge tube.

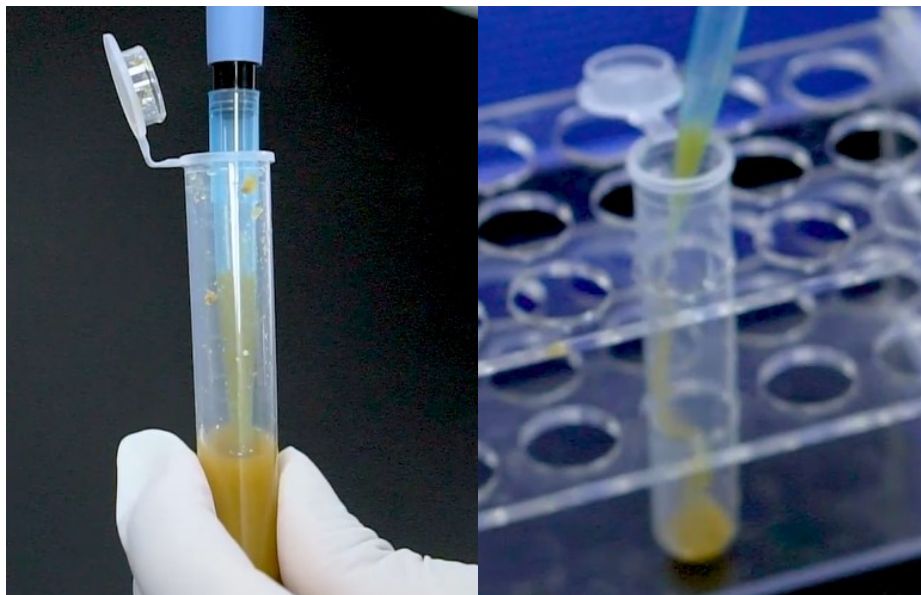


Two dilutions are required in the pre-processing step. Over-dilution may lower formed element concentration. Please dilute carefully following the instructions.

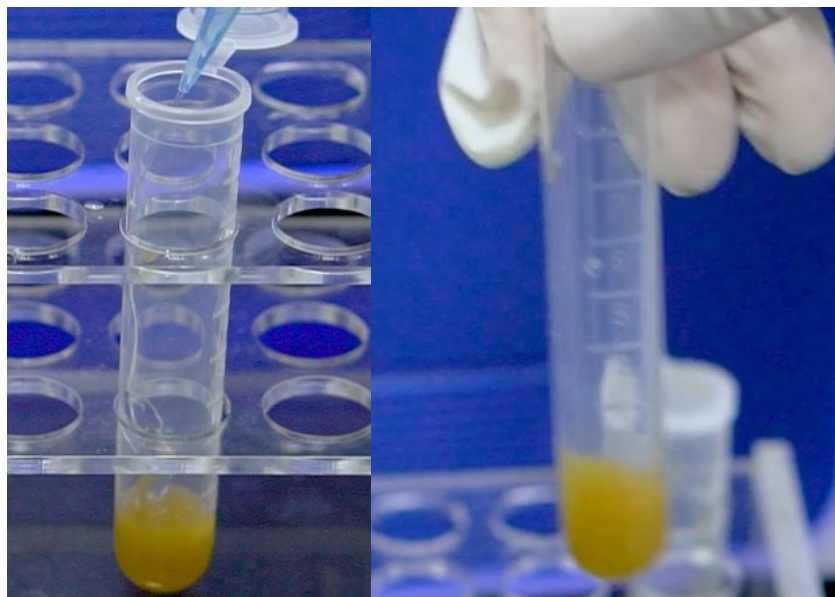
First dilution: Add 3-5 ml of sterile saline and mix until dissolved



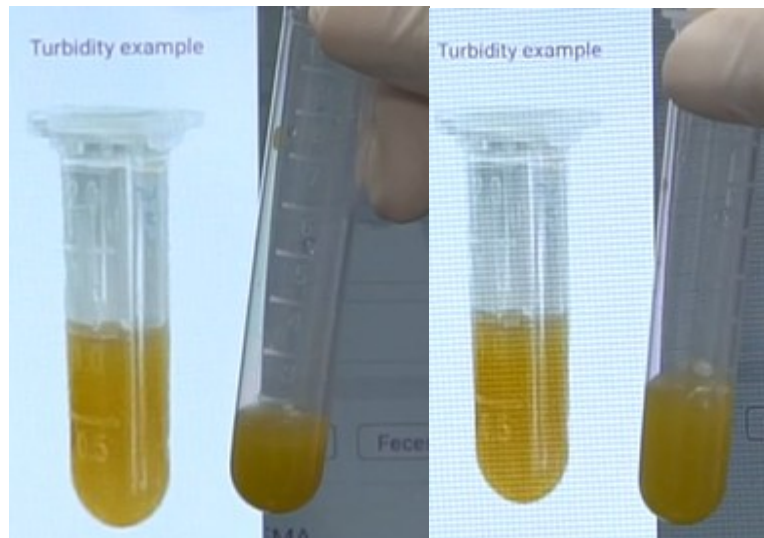
Pipette 200-500 ul of the diluted solution and transfer it into a centrifuge tube.



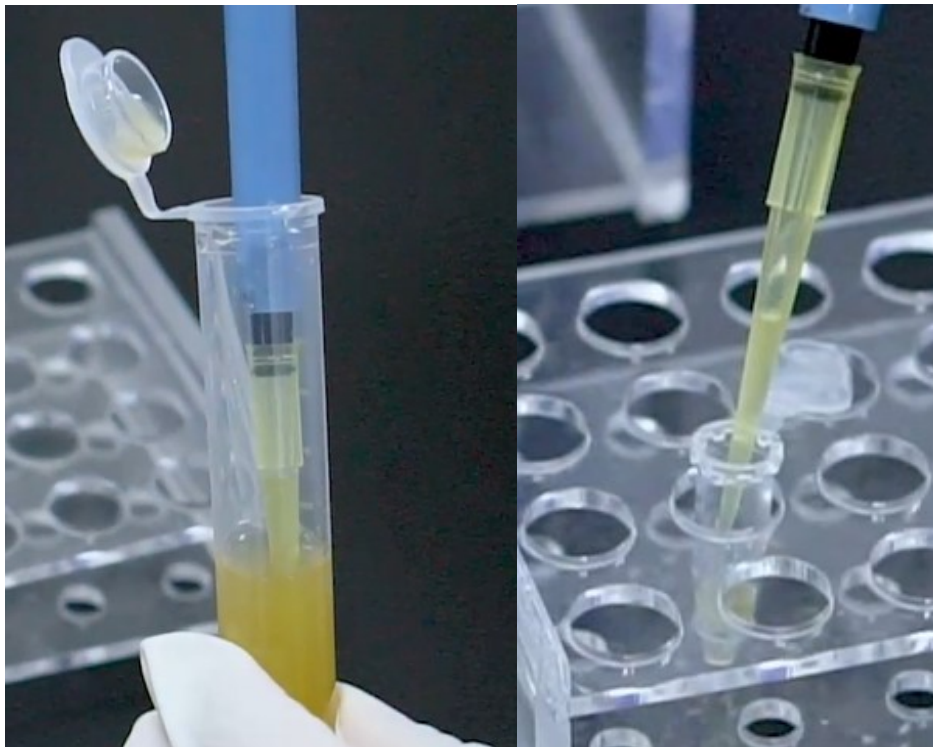
Second dilution: Add small amounts of sterile saline gradually. Close the tube cap and mix the sample thoroughly by inverting the tube several times.



Compare the mixed sample with the reference turbidity in the Sample Pre-processing Instructions. Repeat the dilution until the turbidity matches the reference.



After reaching the reference level, let the sample rest for 1 minute. Then use a pipette to transfer 200 ul of the middle to lower layer of the processed sample into the EP tube.



7. Sample Loading

Input the sample information and make sure the species and sample types are correct. Then click the “FMA” button of the test mode. Choose the consistency and color of the sample.

The screenshot shows the 'Test' screen with a 'Start test' section containing input fields for MRN, Pet Name (York), Pet Type (Feline), Sex (Female), Age (Year/Month), ST* (Feces), and PO. Below this are buttons for 'UMA' and 'FMA' (highlighted with a red box). At the bottom, there are 'Urine' and 'Feces' buttons. To the right, the 'Feces sample information' section allows selection of 'Color' (Brown, Red, Black, Other) and 'Texture' (Soft Stool, Formed Stool, Watery Stool, Other). At the bottom right, 'Back' and 'Next' buttons are visible, with 'Next' highlighted by a red box.

Click “Next” to the FMA Operation instructions, assemble the required consumables according to the Operation instructions, click “Next” and insert them into the instrument.

The screenshot displays the 'FMA Operation instructions' screen with four numbered steps:

- Prepare consumables: Shows icons for a counting chamber, reagent kit, two tip heads, and a sample tube.
- After processing the fecal sample as required, take 0.2mL with the sample tube and place it in the reagent box with the Tip: Shows a pipette tip being used to transfer liquid from a tube into a reagent box.
- Note to fix the sample tube cap in the corresponding: Shows a close-up of a sample tube cap being inserted into a slot on the machine.
- Sample the counting board and reagent box on the machine: Shows the counting board and reagent box being placed on the machine's platform.

 At the bottom, there are 'Cancel Detection' and 'Next' buttons, with 'Next' highlighted by a red box. A checkbox 'Do not show again next time' is also present.

When the consumables are inserted correctly, the green check marks will appear on the screen. Then click the “Slot-in”, the instrument will automatically complete the test.



During the test, the instrument will display the real-time progress on the screen. When the test is complete, the results will be displayed on the screen for viewing.

7. Test Finished

After the test, remove all consumables and discard them in the medical waste bin. Click “Removed” to end the test.